

AVANT CPE 150Mbps

USER MANUAL

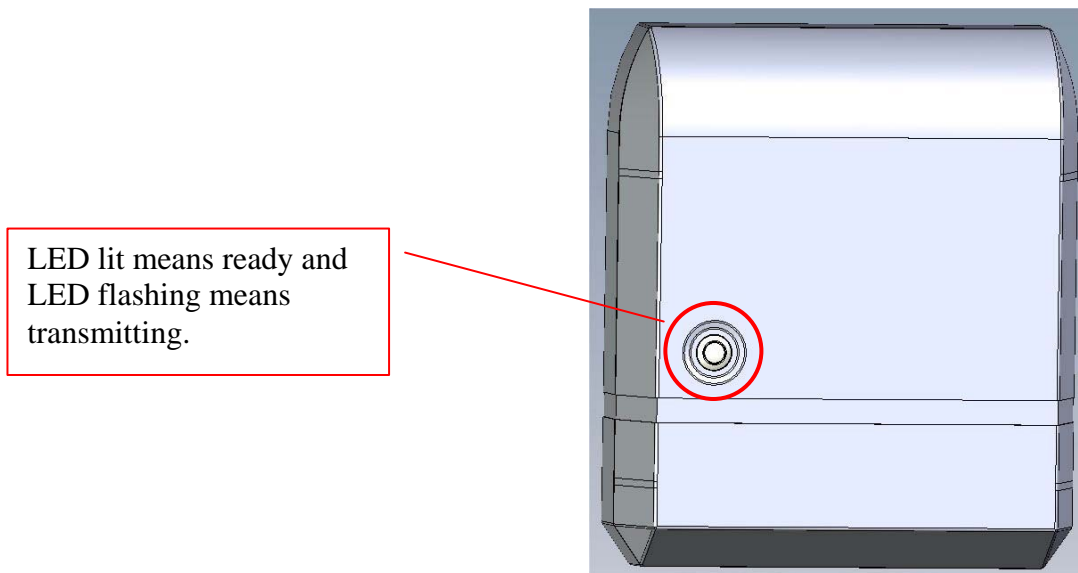
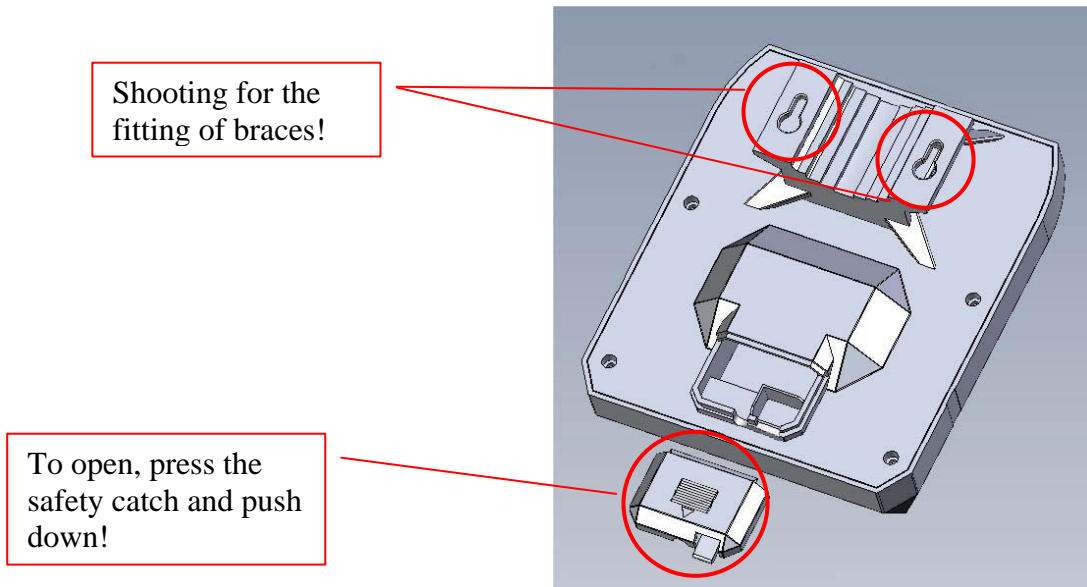
- Easy to install and configure
- UCPE24 (802.11b/g/n)
- Wireless Lan 500mw



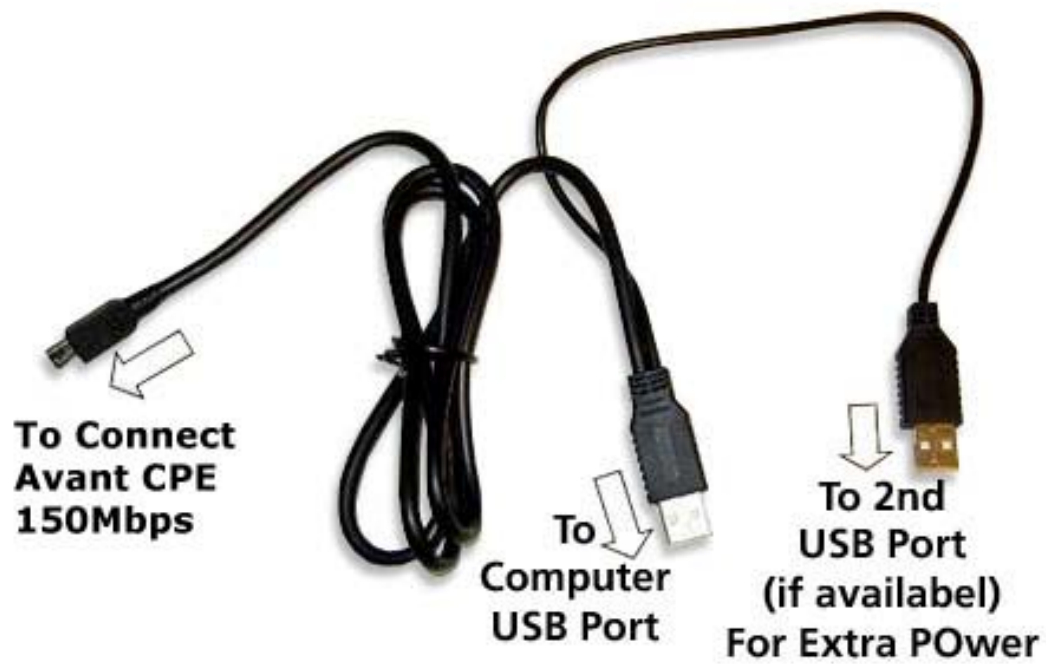
SMART LAN

1. Product Overview:

UCPE24



Cable USB



AVANT CPE 150Mbps User Manual

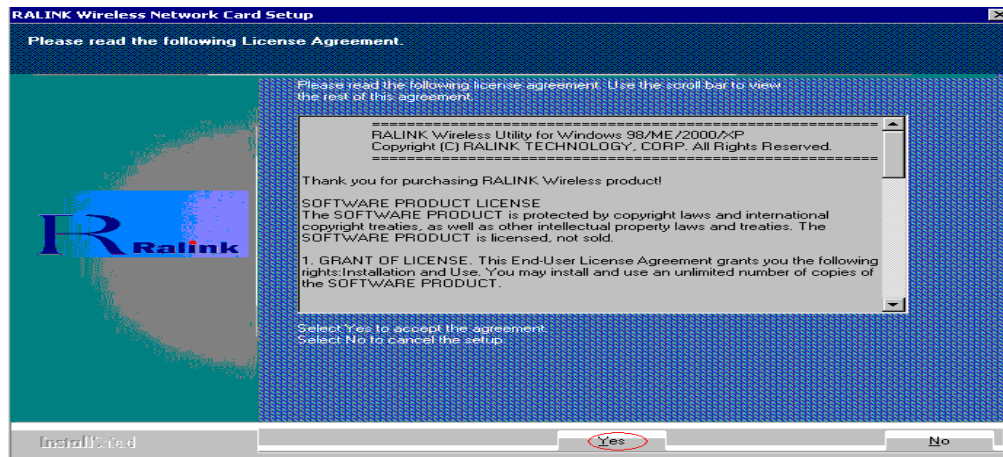
2 Install the driver

a Insert the installation CD into your CD-ROM driver, Double click the icon



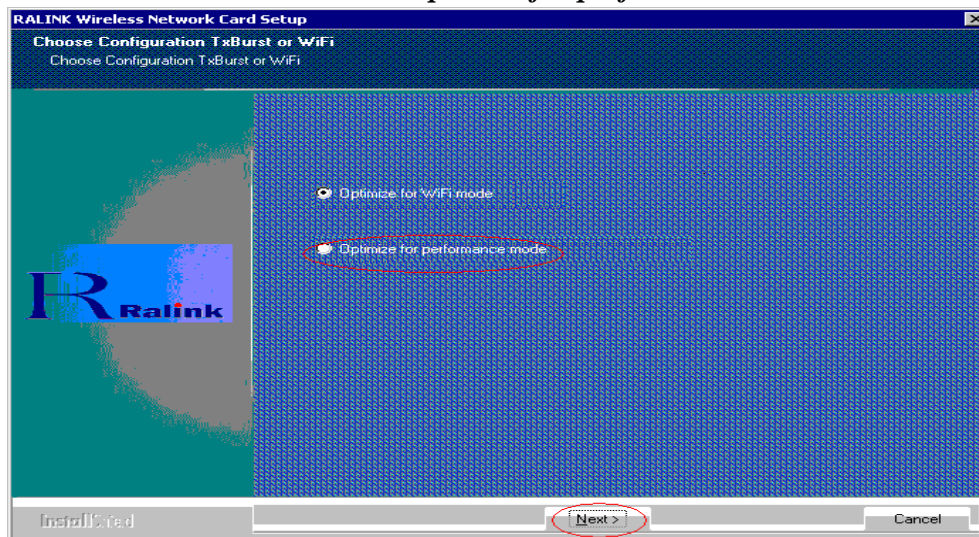
Setup.exe
InstallShield Software Corpora..

to start setup



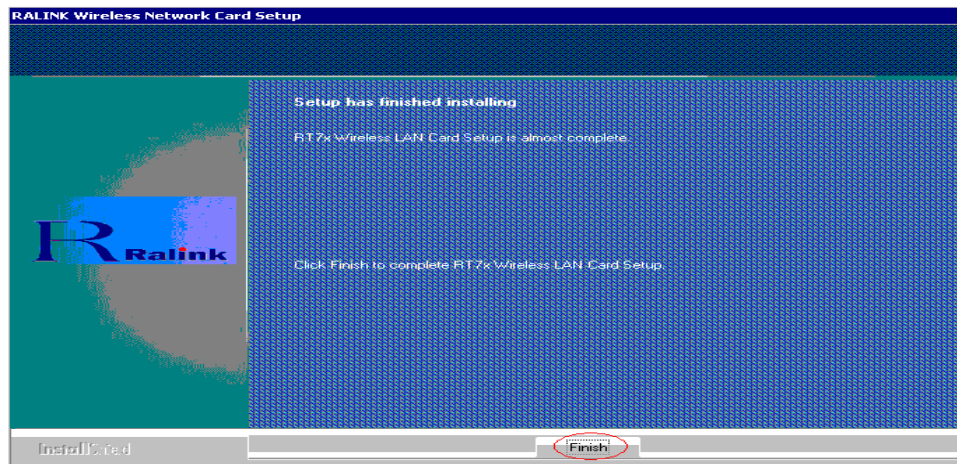
b Click **Yes** to go on

c It's recommended to choice **Optimize for performance mode** click **next** to go on

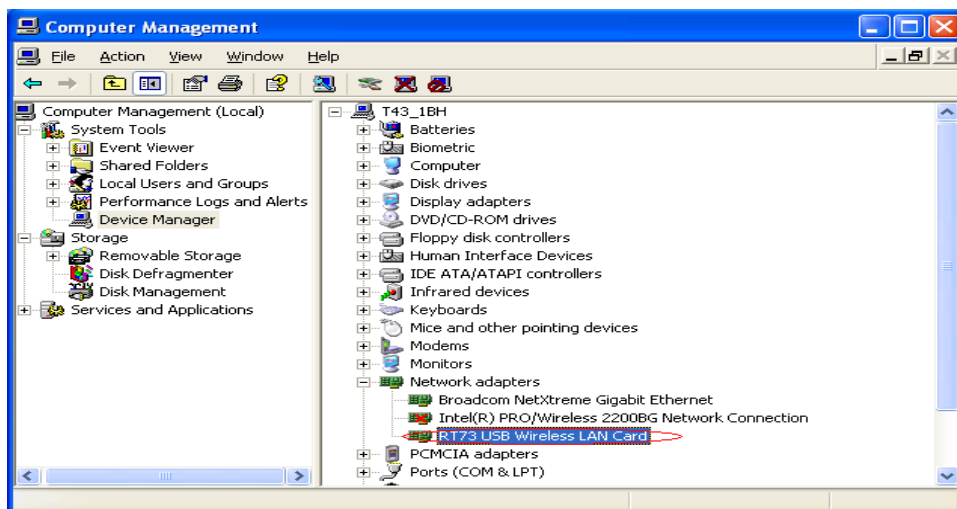


d

e Click **Finish** to end the setup



3 Plug in your usb wireless LAN adapter, it will be recognized and auto installed. Just confirmed it like below:

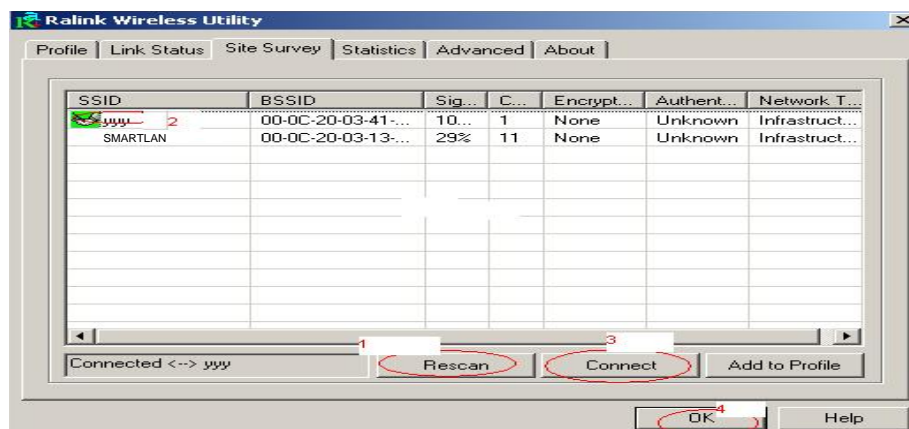


4 Make infrastructure connection

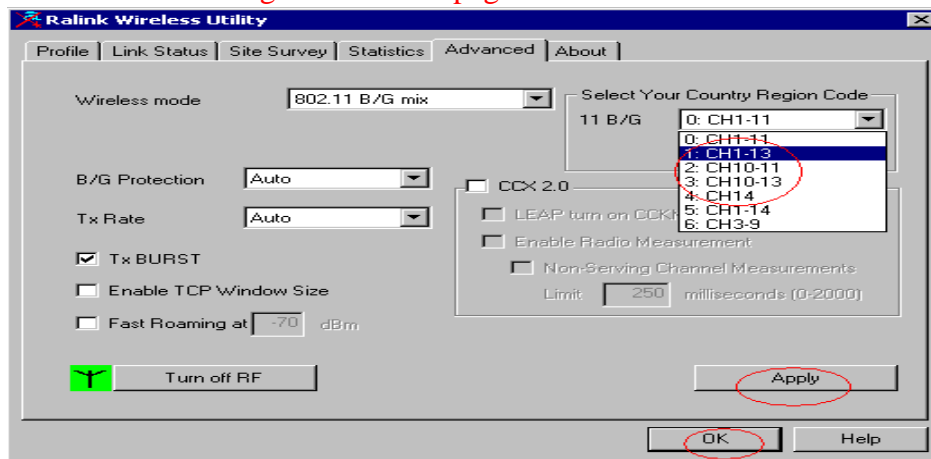
- Double click the icon in red circle



- You will see:

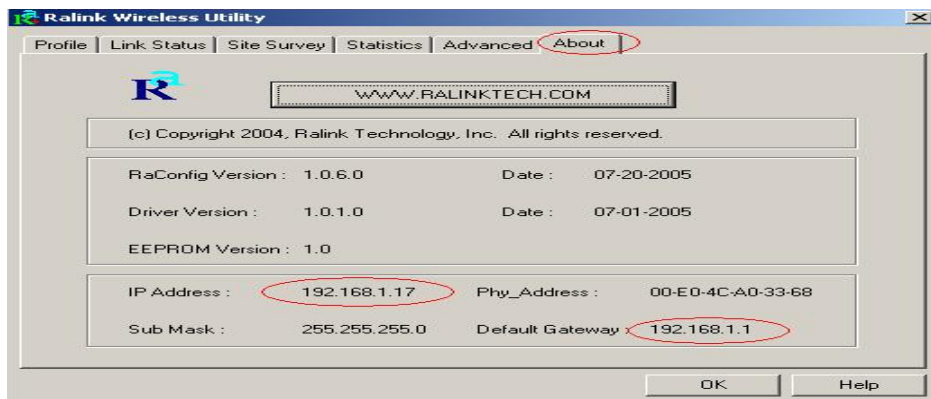


- You can click the button **Rescan** to find which AP is in range, they will show on the window, choice one you want to connect, and click the button **connect**, and click **ok** to finish the connection operation.
- An infrastructure connection is accomplished.
- Note, please choose correct channel setting up to your law, for example, ch13 is permitted in your country, and you set your router at ch13, while you choose ch1-ch11 (default setting), you will never find the AP, and you will have to choose ch1-ch13 setting in **Advanced** page as below

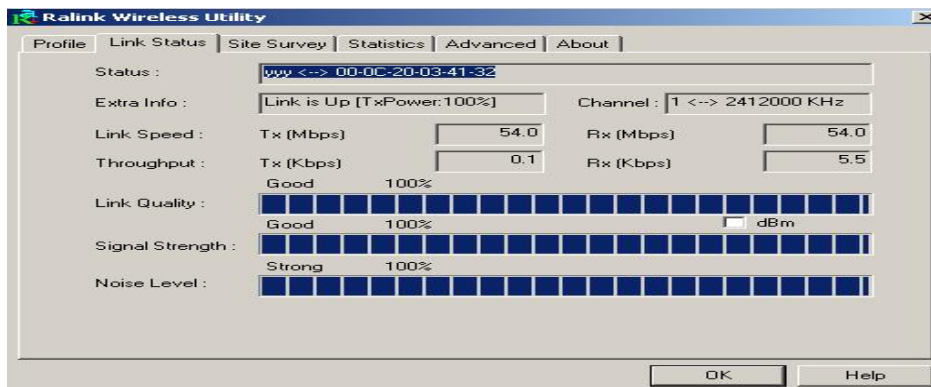


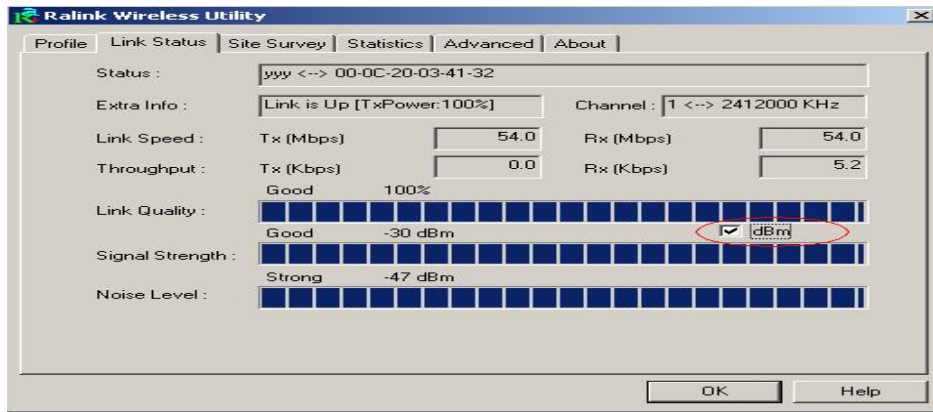
5 Some help information in *Rlink Wireless Utility*

- How to find out your IP address:



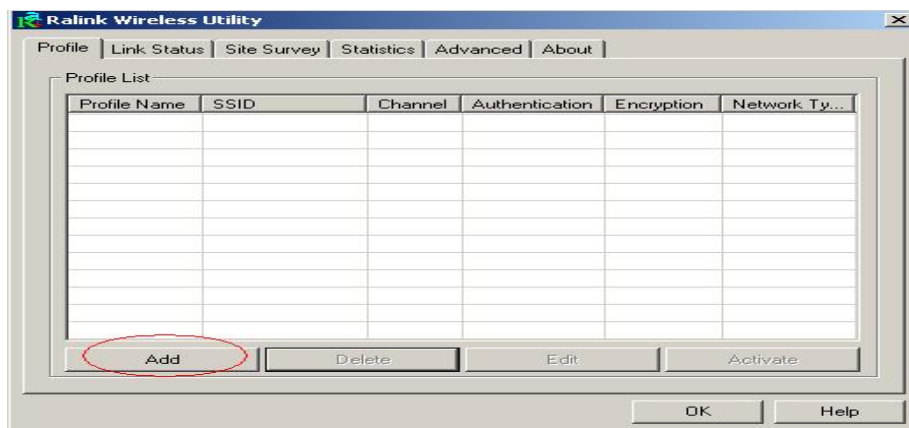
- How to find out which a WIFI environment you are inside



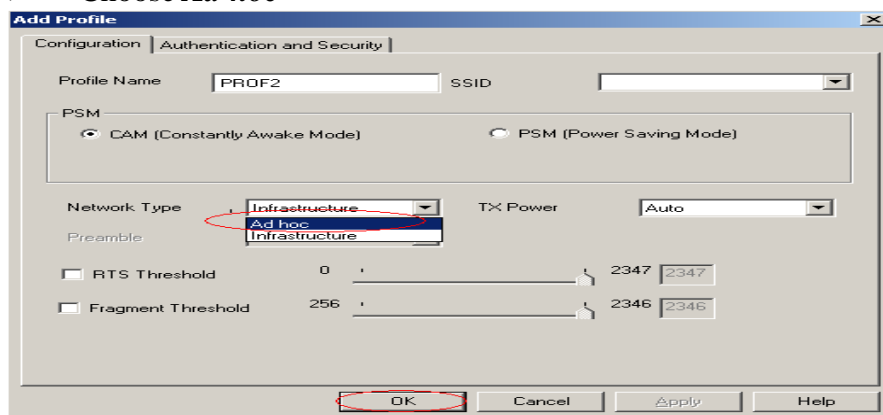


6 .Make Ad-Hoc mode connection

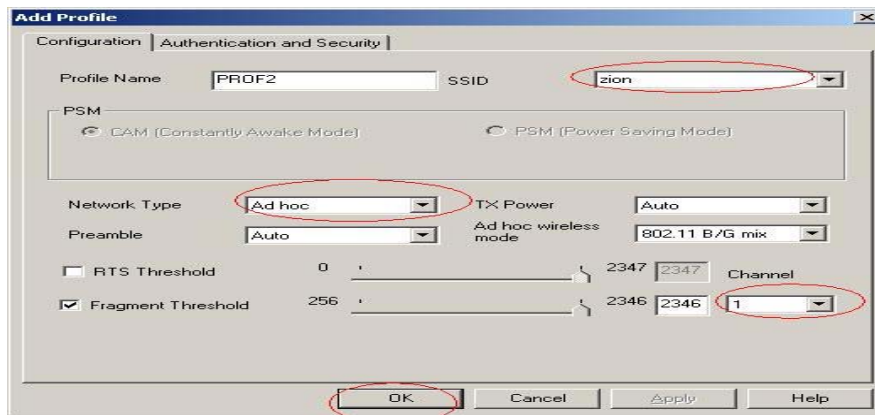
●6.1 Make an Ad-Hoc SSID



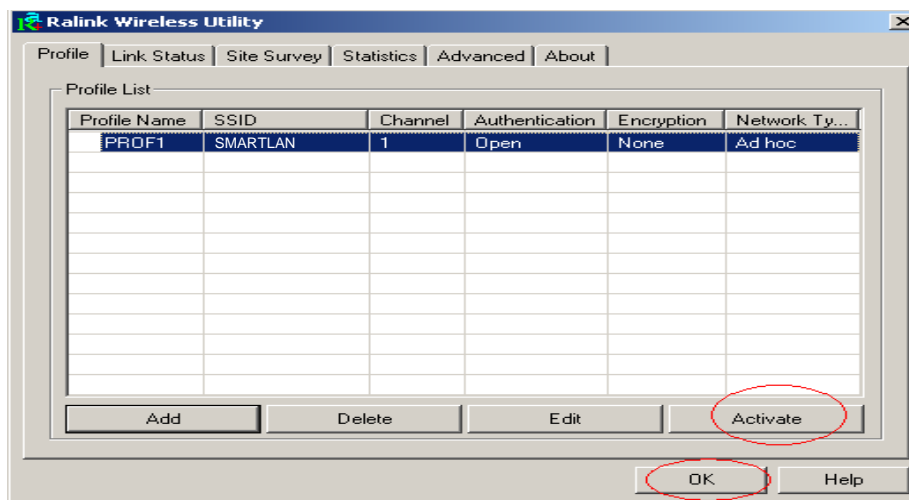
- Click **Add**
- Choose **Ad-hoc**



- Name your **SSID** and choose which channel you want to take for the link

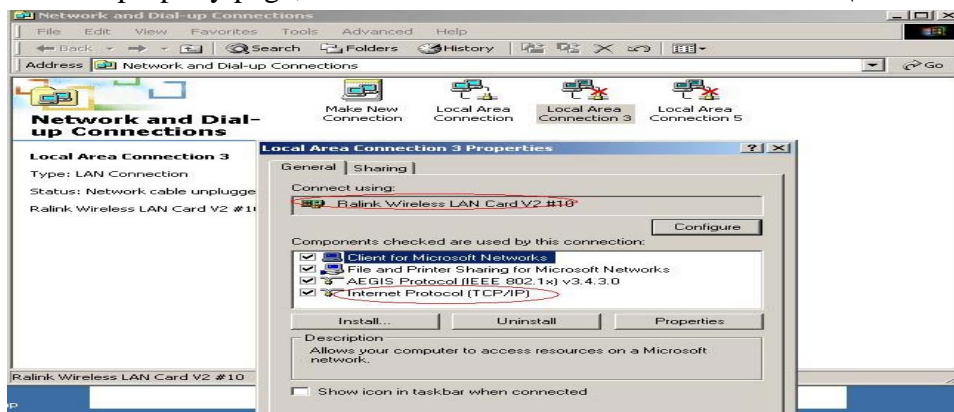


- Activate the link

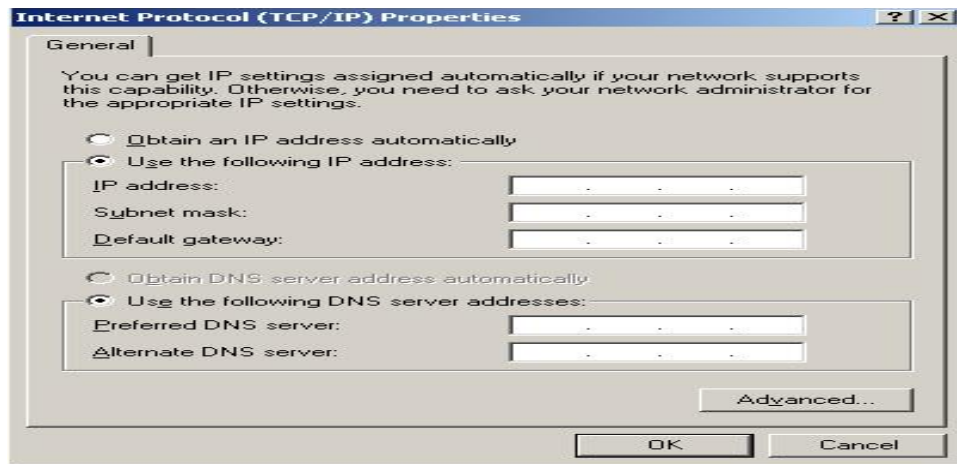


- 6.2 Setup static IP address for the Ad-Hoc link

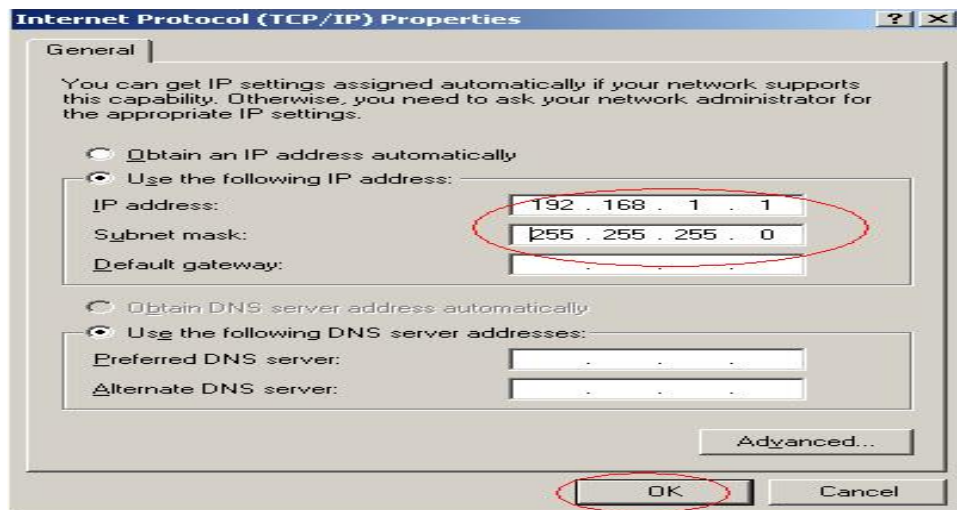
- At its property page, double click item **Internet Protocol** (TCP/IP)



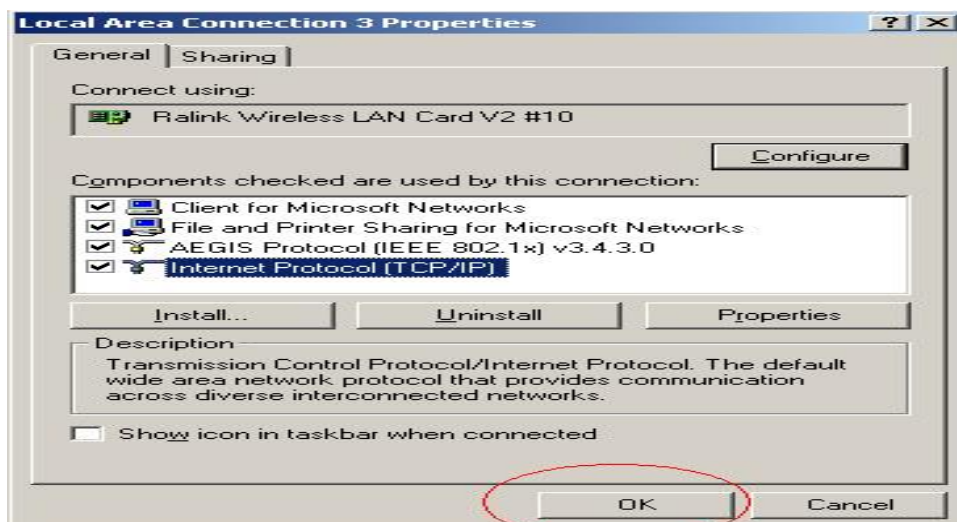
You will get



Fill the IP address blank, example as below:



➤ Click *ok* to finish the setup



- 6.3 Ad-Hoc setup for one point accomplished
- 6.4 Setup another Ad-Hoc point as step A,B,C,D.
- 6.5 Ad-Hoc mode link accomplished. And you can visit each other.

Note: To make an Ad-Hoc mode link, Do remember to choice the same channel, its static IP address should be in the same netsub, and the SSID should be the same too

7 Why it's recommended to choose *optimize for performance* mode while driver installation .

Choose this item, you will get turbo function that is powered by Ralink Technology. With this technology, your will get higher TX throughput.



SMART LAN

www.smartlan.us